

# B3 Series, Three Way, Characterized Control Valve Stainless Steel Ball and Stem

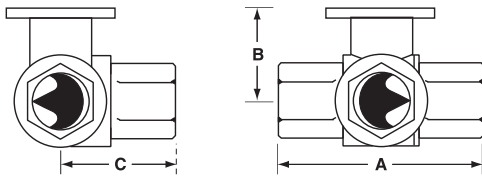


## Technical Data

Service	chilled or hot water, 60% glycol
Flow characteristic	A-port equal percentage B-port modified for constant common port flow
Controllable Flow Range	75°
Sizes	½", ¾", 1", 1¼", 1½", 2"
Type of end fitting	NPT female ends
Materials:	
Body	forged brass, nickel plated
Ball	stainless steel
Stem	stainless steel
Seats	PTFE
Characterizing disc	Tefzel®
Packing	2 EPDM O-rings, lubricated
Body pressure rating	
600 psi	½" - 1"
400 psi	1¼" - 2"
Media temp. range	0°F to 250°F [-18°C to 120°C]
Close off pressure	
200 psi	½" - 2"
Maximum differential pressure (ΔP)	50 psi for typical applications
Leakage	0% for A to AB <2.0% for B to AB
External leakage	according to EN 12266-1:2003
C <sub>v</sub> rating	A-port: see product chart for values B-port: 70% of A to AB C <sub>v</sub>

Tefzel® is a registered trademark of DuPont

## Dimensions



3Way Valve-B307-B320

Valve Nominal Size			Dimensions (Inches [mm])		
Valve Body	Inches	DN [mm]	A	B	C
B307-B311	½"	15	2.41" [61.1]	1.39" [35.2]	1.20" [30.6]
B312-B316	½"	15	2.38" [60.4]	1.78" [45.2]	1.29" [32.8]
B317-B321	¾"	20	2.73" [69.3]	1.87" [47.4]	1.47" [37.3]
B322-B325	1"	25	3.09" [78.4]	1.87" [47.4]	1.59" [40.3]
B329-B331	1¼"	32	3.96" [100.6]	2.27" [57.7]	2.14" [54.3]
B338-B341	1½"	40	4.39" [111.6]	2.51" [63.7]	2.40" [61.1]
B347-B352	2"	50	4.90" [124.5]	2.73" [69.5]	2.74" [69.7]

## Application

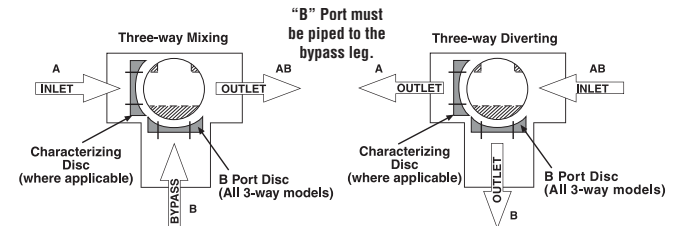
This valve is typically used in air handling units on heating or cooling coils, and fan coil unit heating or cooling coils. Some other common applications include Unit Ventilators, VAV box re-heat coils and bypass loops. This valve is suitable for use in a hydronic system with variable or constant flow.

\* (Not for use in change over applications)

Valve Nominal Size			Type	Suitable Actuators	
C <sub>v</sub>	Inches	DN [mm]	3-Way NPT	Non-Spring	Spring
0.3	½"	15	B307	TR Series	LR Series NR...N4 Series TF Series LF Series
0.46	½"	15	B308		
0.8	½"	15	B309		
1.2	½"	15	B310		
1.9	½"	15	B311		
3	½"	15	B312		
4.7	½"	15	B313		
10	½"	15	B315		
16	½"	15	B316		
4.7	¾"	20	B317		
7.4	¾"	20	B318	AR Series AR...N4 Series	AF Series
14	¾"	20	B320		
24	¾"	20	B321		
7.4	1"	25	B322		
10	1"	25	B323		
30	1"	25	B325*		
10	1¼"	32	B329		
19	1¼"	32	B330		
25	1¼"	32	B331		
19	1½"	40	B338		
29	1½"	40	B339	AR...N4 Series	AF Series
37	1½"	40	B340		
46	1½"	40	B341		
29	2"	50	B347		
37	2"	50	B348		
46	2"	50	B349		
57	2"	50	B350		
68	2"	50	B351		
83	2"	50	B352		

\* Models without characterizing disc

## Flow Patterns



P10419 - 09/13 - Subject to change. © Belimo Aircontrols (USA), Inc.



MFT



### Models

AFRB24-MFT N4	Basic Version
AFRB24-MFT-S N4	Basic Version w/built-in aux. switch
AFRB24-MFT N4H	Basic Version w/built in heater
AFRB24-MFT-S N4H	Basic Version w/built-in aux. switch & heater
AFRX24-MFT N4	Flexible Version
AFRX24-MFT-S N4	Flexible Version w/built-in aux. switch
AFRX24-MFT N4H	Flexible Version w/built in heater
AFRX24-MFT-S N4H	Flexible Version w/built in aux. switch & heater

### Technical Data

Power supply	24 VAC, +/- 20%, 50/60 Hz 24 VDC, +20% / -10%
Power consumption♦	running 7.5 W / heater 25 W holding 3 W
Transformer sizing	10 VA (Class 2 power source) / heater 25 VA
Electrical connection	3 ft [1m], 10 ft [3m] or 16 ft [5m] 18 GA appliance cables, with 1/2" conduit connector -S models: two 3 ft [1m], 10 ft [3m] or 16 ft [5m] appliance cables with 1/2" conduit connectors heater (N4H) terminal block, 26-16 GA
Overload protection	electronic throughout 0 to 95° rotation
Operating range Y*	2 to 10 VDC, 4 to 20 mA (default) variable (VDC, PWM, floating point, on/off)
Input impedance	100 kΩ for 2 to 10 VDC (0.1 mA) 500 Ω for 4 to 20 mA 1500 Ω for PWM, floating point and on/off control
Feedback output U*	2 to 10 VDC, 0.5 mA max
Torque	minimum 180 in-lb (20 Nm)
Direction of rotation*	spring reversible with cw/ccw mounting inside housing motor reversible with built-in switch
Mechanical angle of rotation*	95° (adjustable with mechanical end stop, 35° to 95°)
Running time	motor* 150 seconds (default), variable (70 to 220 seconds) spring <20 sec @ -4°F to 122°F [-20°C to 50°C]; <60 sec @ -22°F [-30°C] spring (with heater) <20 sec @ -4°F to 122°F [-20°C to 50°C]; <60 sec @ -49°F [-45°C]
Angle of Rotation adaptation	off (default)
Override control*	min position = 0% mid. position = 50% max. position = 100%
Position indication	visual indicator, 0° to 95° (0° is spring return position)
Manual override	5 mm hex crank (3/16" Allen), supplied
Humidity	max. 95% RH non-condensing
Ambient temperature	-22°F to 122°F (-30°C to 50°C) with heater -49°F to 122°F (-45°C to 50°C)
Storage temperature	-40°F to 176°F (-40°C to 80°C)
Housing	UL Type 4, NEMA 4, IP66
Housing material	polycarbonate
Noise level	≤40dB(A) motor @ 150 seconds, run time dependent ≤62dB(A) spring return
Agency listings †	cULus acc. to UL60730-1A/-2-14, CAN/CSA E60730-1:02, CE acc. to 2004/108/EC & 2006/95/EC
Quality standard	ISO 9001
Servicing	maintenance free
Weight	9.7 lbs. (4.4 kg), 10 lbs. (4.5 kg) with switches 10.5 lbs (4.8 kg) with heater

\* Variable when configured with MFT options

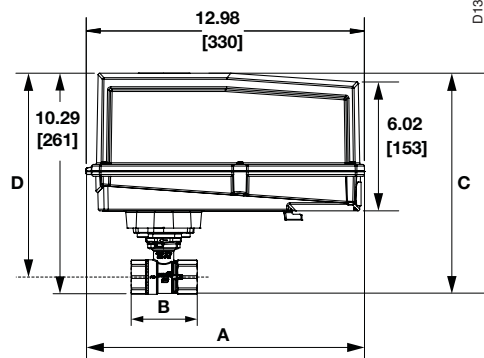
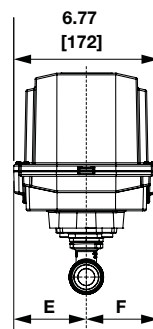
† Rated Impulse Voltage 800V, Type of action 1,AA (1,AA.B for -S version), Control Pollution Degree 4.

♦ Programmed for 70 sec motor run time. At 150 sec motor run time, transformer sizing is 8.5 VA and power consumption is 6 W running / 3 W holding.

### AFRB24-MFT-S N4, AFRB24-MFT-S N4H, AFRX24-MFT-S N4, AFRX24-MFT-S N4H

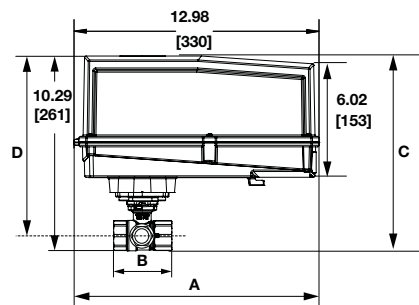
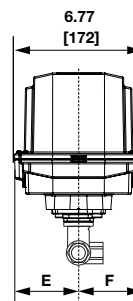
Auxiliary switches	2 x SPDT 3A (0.5A) @ 250 VAC, UL approved one set at +10°, one adjustable 10° to 90°
--------------------	---

### Dimensions with 2-Way Valve



Valve Body	Valve Nominal Size		Dimensions (Inches [mm])	
	Inches	DN [mm]	A	B
B231-B232	1 1/4"	32	3.72" [94.6]	1.84" [47.4]
B238-B240	1 1/2"	40	3.88" [98.5]	2.04" [51.9]
B248-B254	2"	50	4.93" [125.2]	2.73" [69.5]
B261-B265	2 1/2"	65	5.55" [140.9]	2.73" [69.5]
B277-B280	3"	80	5.82" [147.9]	2.73" [69.5]

### Dimensions with 3-Way Valve



Valve Body	Valve Nominal Size		Dimensions (Inches [mm])		
	Inches	DN [mm]	A	B	C
B329-B331	1 1/4"	32	3.96" [100.6]	2.27" [57.7]	2.14" [54.3]
B338-B341	1 1/2"	40	4.39" [111.6]	2.51" [63.7]	2.40" [61.1]
B347-B352	2"	50	4.90" [124.5]	2.73" [69.5]	2.74" [69.7]

AFRB24-MFT N4, AFRB24-MFT-S N4, AFRB24-MFT N4H, AFRB24-MFT-S N4H  
AFRX24-MFT N4, AFRX24-MFT-S N4, AFRX24-MFT N4H, AFRX24-MFT-S N4H



NEMA 4, Proportional, Spring Return, Direct Coupled, 24V, Multi-Function Technology®

Accessories	
Tool-06	8mm and 10 mm wrench
43442-00001	Gland (needed for additional wires)
11097-00001	Gasket for Gland (needed for additional wires)

**NOTE:** When using AFRB24-MFT N4, AFRB24-MFT-S N4, AFRB24-MFT N4H, AFRB24-MFT-S N4H AFRX24-MFT N4, AFRX24-MFT-S N4, AFRX24-MFT N4H, AFRX24-MFT-S N4H actuators, only use accessories listed on this page. For actuator wiring information and diagrams, refer to Belimo Wiring Guide.

Typical Specification

The actuator must provide proportional damper control in response to a 2 to 10 VDC or, with the addition of a 500Ω resistor, a 4 to 20 mA control input from an electronic controller or positioner. The actuators must be designed so that they may be used for either clockwise or counterclockwise fail-safe operation. Actuators shall use a brushless DC motor controlled by a microprocessor and be protected from overload at all angles of rotation. Run time shall be constant, and independent of torque. A 2 to 10 VDC feedback signal shall be provided for position feedback. Actuators shall be cULus Approved and have a 5 year warranty, and be manufactured under ISO 9001 International Quality Control Standards. Actuators shall be as manufactured by Belimo.

Wiring Diagrams

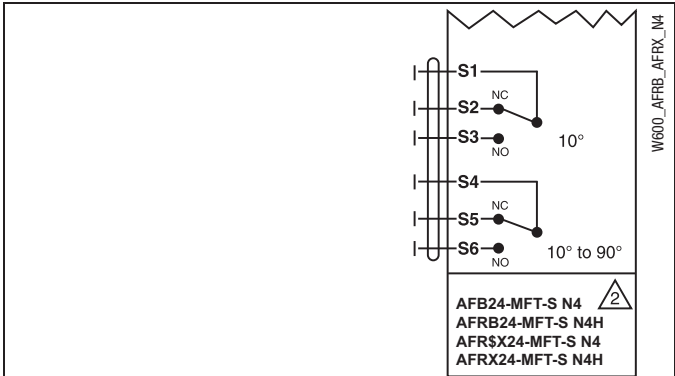
INSTALLATION NOTES

- 1 Provide overload protection and disconnect as required.
- 2 **CAUTION Equipment Damage!** Actuators may be connected in parallel if not mechanically linked. Power consumption and input impedance must be observed.
- 3 Actuators may also be powered by 24 VDC.
- 4 Position feedback cannot be used with Triac sink controller. The actuator internal common reference is not compatible.
- 5 Control signal may be pulsed from either the Hot (source) or the Common (sink) 24 VAC line.
- 8 Contact closures A & B also can be triacs.
- 9 For triac sink the common connection from the actuator must be connected to the hot connection of the controller.

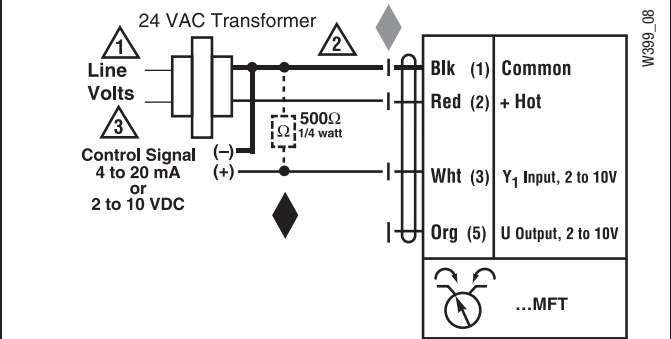
APPLICATION NOTES

- Meets UL requirements without the need of an electrical ground connection.
- The ZG-R01 500 Ω resistor may be used.

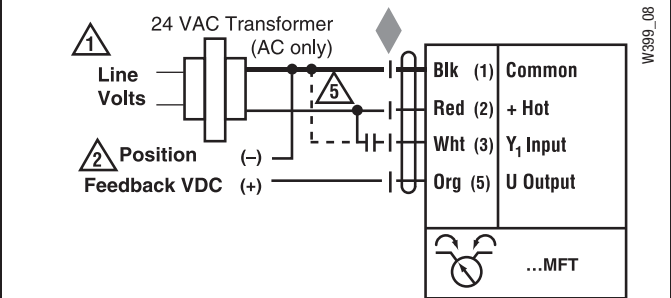
**WARNING Live Electrical Components!**  
During installation, testing, servicing and troubleshooting of this product, it may be necessary to work with live electrical components. Have a qualified licensed electrician or other individual who has been properly trained in handling live electrical components perform these tasks. Failure to follow all electrical safety precautions when exposed to live electrical components could result in death or serious injury.



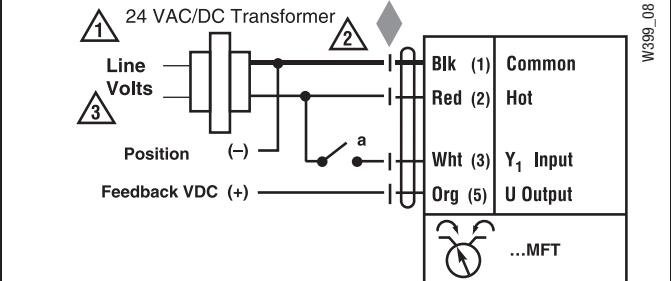
Auxiliary Switches



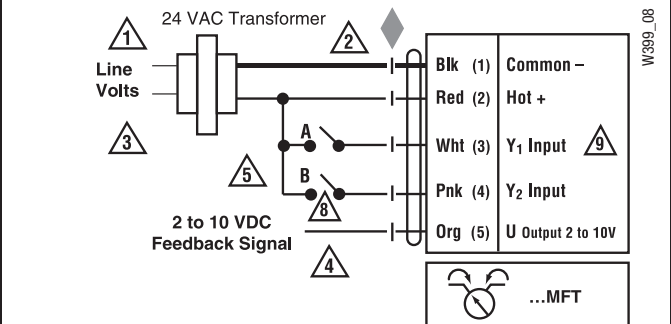
VDC/4-20 mA



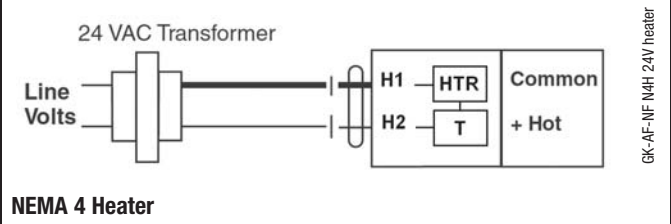
PWM



On/Off Control



Floating Point Control



NEMA 4 Heater

AFRB24 N4, AFRB24 N4H, AFRB24-S N4, AFRB24-S N4H, AFRX24 N4, AFRX24 N4H, AFRX24-S N4, AFRX24-S N4H



NEMA 4, On/Off, Spring Return, 24 V

Accessories	
Tool-06	8mm and 10 mm wrench
43442-00001	Gland (needed for additional wires)
11097-00001	Gasket for Gland (needed for additional wires)

**NOTE:** When using AFRB24 N4, AFRB24 N4H, AFRB24-S N4, AFRB24-S N4H, AFRX24 N4, AFRX24 N4H, AFRX24-S N4, AFRX24-S N4H actuators, only use accessories listed on this page. For actuator wiring information and diagrams, refer to Belimo Wiring Guide.

Typical Specification

The actuators must be designed so that they may be used for either clockwise or counterclockwise fail-safe operation. Actuators shall be protected from overload at all angles of rotation. If required, two SPDT auxiliary switch shall be provided having the capability of one being adjustable. Actuators with auxiliary switches must be constructed to meet the requirements for Double Insulation so an electrical ground is not required to meet agency listings. Actuators shall be cULus Approved and have a 5 year warranty, and be manufactured under ISO 9001 International Quality Control Standards. Actuators shall be as manufactured by Belimo.

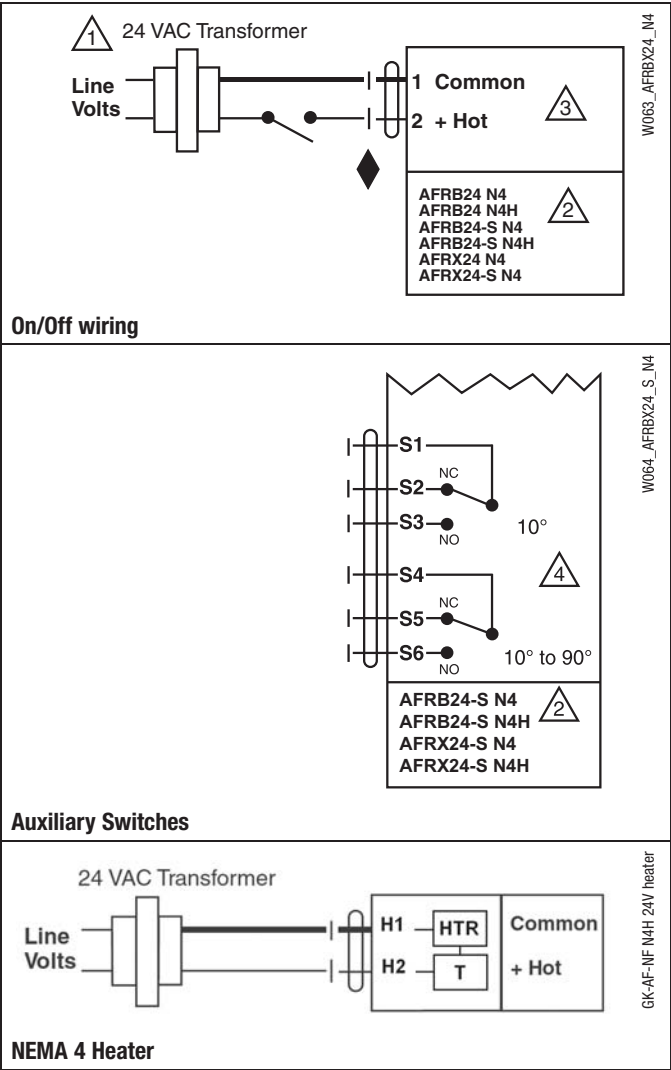
Wiring Diagrams

INSTALLATION NOTES

- 1 Provide overload protection and disconnect as required.
- 2 **CAUTION Equipment Damage!** Actuators may be connected in parallel. Power consumption and input impedance must be observed.
- 3 Actuators may also be powered by 24 VDC.
- 4 For end position indication, interlock control, fan startup, etc., AFRB24-S N4, AFRB24-S N4H, AFRX24-S N4, AFRX24-S N4H incorporates two built-in auxiliary switches: 2 x SPDT, 3A (0.5A) @250 VAC, UL Approved, one switch is fixed at +10°, one is adjustable 10° to 90°.

APPLICATION NOTES

- Meets cULus requirements without the need of an electrical ground connection.
- WARNING Live Electrical Components!** During installation, testing, servicing and troubleshooting of this product, it may be necessary to work with live electrical components. Have a qualified licensed electrician or other individual who has been properly trained in handling live electrical components perform these tasks. Failure to follow all electrical safety precautions when exposed to live electrical components could result in death or serious injury.



P10419 - 09/13 - Subject to change. © Belimo Aircontrols (USA), Inc.